

# COMPANY PROFILE

## **BRIGHT POWERTECH LTD.**

*safety, comfort & fast support...*



**Bright**  
POWERTECH LTD.  
ISO 9001:2008 CERTIFIED

## COMPANY AT A GLANCE

|                                   |   |
|-----------------------------------|---|
| Name of the Company               | : <b>BRIGHT POWERTECH LTD.</b>  |
| Year of establishment             | : 2006  |
| Nature of Business                | : Importer & Service Provider   |
| Certificate of Incorporation No.: | C-64792 (2284)/06   |
| Trade License Number              | : TRAD/DSCC/1659332019  |
| TAX Identification Number         | : 880830240353/Circle-161   |
| VAT Registration Number           | : BIN:002148969-0402  |
| IRC Number                        | : 260326110642019   |
| ABC License                       | : C20210003185  |
| ISO Certified                     | : 9001:2008   |
| Registered Address                | : 44/F/8 (4th floor), West Panthapath<br>Dhaka-1215, Bangladesh.  |
| Telephone Number                  | : +88 02 41025287   |
| E-mail                            | : brightpowertech@gmail.com<br>brightpowertechinfo@gmail.com  |
| Web Address                       | : www.brightpowertech.net   |
| Bank Information                  | : 1. Premier Bank Ltd., Panthapath Branch<br>2. Shahajalal Islami Bank Ltd., Dhanmondi Branch<br>3. Estern Bank Ltd., Dhanmondi Branch<br>4. Export Import Bank Ltd., Panthapath Branch |

### PROUD MEMBERS OF



India Bangladesh  
Chamber of Commerce and Industry



Dutch-Bangla  
Chamber of Commerce and Industries



General Membership No: 002  
Bangladesh Elevator Escalators & Lift  
Importers Association (BEELIA)

### HOTLINE

#### SALES & MARKETING

+88 01619900115

#### CUSTOMER SERVICE

+88 01619900199

+88 01619900190

#### ADMINISTRATION

+88 01619900120

+88 01619900123

## MEET THE MEN BEHIND THE ORGANIZATION



**Md. Shafiul Alam Uzzwal**  
Managing Director  
**Bright Powertech Ltd.**

Md. Shafiul Alam Uzzwal is the founder and managing director of Bright Powertech Ltd. He was born in the year 1969 in the beautiful city of Pabna. During his early days he proved to be a brilliant student with lots of extracurricular activities up his sleeve. After graduating through high school he completed his Graduation and Master's under University of Dhaka. Since his early days he was a very big business enthusiast. He entered the elevator and escalator industry in 1994. He spent more than half of his life in this particular sector. He is often regarded as one of the most knowledgeable person on lift. He has also been trained abroad on elevator & escalator industry. That is how he has achieved vast knowledge on this particular sector. He always ensures his customers top notch servicing and maintenance through his company. Throughout his life time he has been a man of principles and ethics. He has certain moral conducts that he always maintains while conducting business. He is also the Founder Secretary of Bangladesh's first elevator association BEELIA.



**Md. Saidul Haque Sadi**  
Chairman  
**Bright Powertech Ltd.**

Saidul Haque Sadi is the chairman of Bright Powertech Ltd. He was born in the year 1957 at the capital city Dhaka. During his early days he was always a sports enthusiast. So much so that he made a career out of it. Of all the games, he found his foot in table tennis. His professional table tennis career has been nothing short of a wonderful journey many sportsman desire. He was four times National Champion (1981, 1984, 1985 & 1995). While his last one was a memorable comeback after 10 years to clinch his title. He is the only player from Bangladesh to have represented the country in World Veterans Table Tennis Championship for a record number of 3 times. His vast career in games and sports has earned him the honour of getting a National Award from our honourable Prime Minister Sheikh Hasina in the year 2008. It was during a social work event Mr. Sadi met our respected Managing Director Md. Shafiul Alam Uzzwal. As days passed their friendship grew and they turned their friendship to a business partnership.

# BRIGHT POWERTECH LTD.

*safety, comfort & fast support...*

**BRIGHT POWERTECH LTD. (BPL)** started its journey in the field of elevator, escalator, generator, sub-station and power related jobs from almost the beginning of the century. Within a very short period of time BPL earned very good recognition around the country. It is known for its excellent customer support, quality product and it's after sales service. It also has one of the country's best human resources in this specialized sector. BPL has been doing business for the last 17 years with full satisfaction from the user end.

From the very beginning, BPL is striving to do the best for its customers by not using any local components and materials for Elevators & Escalators. BPL is not only providing quality products but also extending consultancy to their customers. It offers a complete range of products and the safest solution for the elevators, escalators, generator and all electrical products.

BPL has been dealing with world renowned brands and never compromise on quality.

## Why choose Bright Powertech Ltd.

Bright Powertech has their hands on this sector for the past 18 years. We have worked with world class brands and have completed more than 500+ projects. Amongst all those projects there has been a lot of landmark projects that BPL has taken part in.

BPL also provides free consultancy to their customers so that they can get the best products for their projects.

## Mission & Vision

The Slogan of BPL is "Safety, Comfort, Fast Support". BPL gives the top priority on the safety of its products more particularly on Elevator, Escalator and Moving Walkways. To give people comfort and prompt after sales service is our main aim. By ensuring comfort of products and fast after sales support BPL has earned the full satisfaction of its clients. BPL will look forward to serve it's customers as market leaders in the future.

## Company Objective

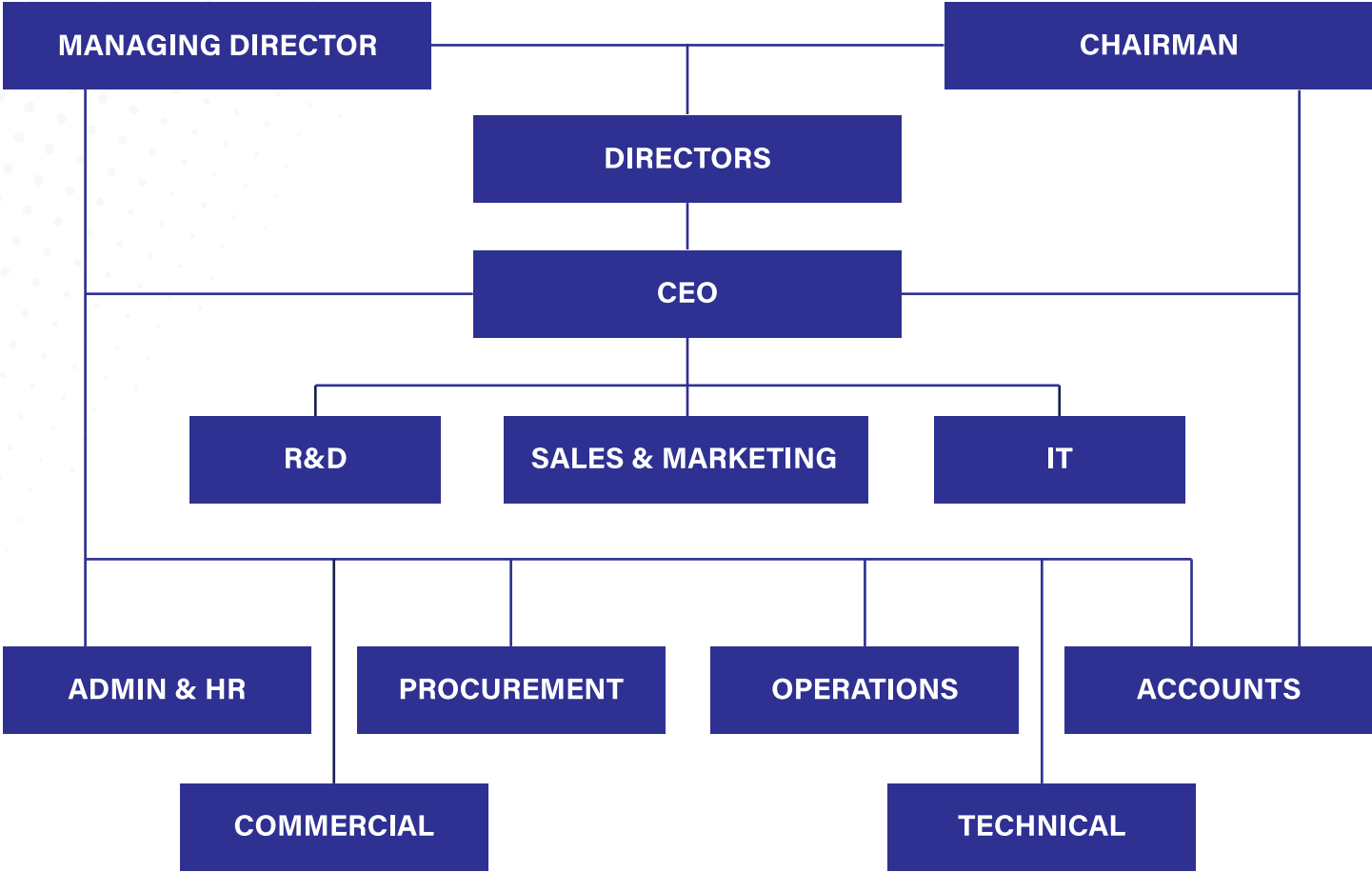
- To ensure the quality and performance durability for all products.
- To supply customized design & user friendly products.
- To ensure the reliability and customers satisfaction providing excellent after sales service.
- To enhance the good will of this industry, establish a sustainable growth in relevant market.

## What We Do?

- Supply, installation, testing & commissioning new Elevator, Escalator, Moving Walkways, Generators, Substation etc.
- Service and maintenance of the above items
- Modernization and Up gradation of existing old elevators, escalators etc.
- Supply Spare parts & different components of Elevator, Escalator, Generator and other Electrical devices.
- We are professional and skilled in trouble shooting for any related products.

# BRIGHT POWERTECH LTD.

## ORGANOGRAM







## After Sales Services

Our strength is our Service & maintenance. We provide 24 hour service 7 days a week for any of our products. Our highly skilled engineers and technicians are engaged in trouble-shooting of any technical problem in a shortest possible time.

## Our Products

- ELEVATOR (Lift)
- ESCALATOR
- MOVING WALKWAYS
- GENERATOR
- SUBSTATION
- BUSBAR TRUNKING (BBT)
- AUTOMATION SYSTEM
- ELECTRICAL EQUIPMENTS

**Bright**  
POWERTECH LTD.



**ELEVATOR**



**GENERATOR**



**BBT**



**AUTOMATION SYSTEM**

# **SANYO**

## **Elevator, Escalator & Moving Walkways**

### **Lift & Escalator**

**BRIGHT POWERTECH LTD. (BPL)** Introduces itself as the sole distributor of world renowned brand SANYO Elevator, Escalator & Moving Walkways in the territory of Bangladesh. SANYO is one of the most renowned brands in the elevator world. SANYO elevator and Escalator are accomplished with all standard safety measures to ensure the safety of the people in case of any incident. SANYO's R & D department is always engaged to develop its quality and service.

### **Why SANYO?**

1. High Technology, Durable and user friendly.
2. Faster, smooth riding, safety & noise reduction.
3. 30% reduction in power source requirement along with Small torque ripple & less than 48db running noise.
4. Adapting the alternation current servo motor control technology, considering the design of door machine controller and drive motor to gain the perfect performance.
5. Door operator has been tested for continuous operation more than 1.5 million times without any failure.
6. Integrated Control System.
7. According to safety code EN 81.1, EN 115
8. Fitted with Green Technology thus reducing energy consumption & CO2 emissions.
9. Rewritable Software for future adjustment at the site.
10. Faster After sale service & Trouble shooting.



# GENERATOR



*Bright*  
POWERTECH LTD.

## Generator

BRIGHT POWERTECH LTD. (BPL) supplies UK origin Generators, USA origin Generators and Chinese as well of different capacity ranging from 20 kVA to 3000 kVA. We supply USA origin CUMMINS engine, England origin PERKINS engine, Germany origin DEUTZ engine, Sweden origin VOLVO engine etc. coupled with FRANCE origin LEROY SOMER alternator or England origin STAMFORD alternator. We also supply Chinese production 1st class generating sets.



## Substation

Substation is the key element in power transmission and distribution networks. BPL has specialized knowledge to construct & upgrade Substation for Housing, Commercial Premises, Industrial & Administrative buildings respectively. As per the customer desire we manage the whole process of power connection too.

**BPL** assembles sheet steel clad (16 SWG & 18 SWG), dust & vermin proof, free standing floor mounting, indoor type HT & LT Switchgear, PFI Panel along with TPN & E hard drawn electrolytic copper busbar confirming to IEC-439 standards equipped with super quality paint also.

VCB or LBS we provide from our own manufacturing workshop including all accessories.

**BPL** supplies 3 Phase, 50Hz, oil immersed naturally air cooled ONAN distribution transformer according to VDE/DIN/IEC/BS standard. We provide reliable brand Transformer of customer choice or selective one from our end.

SUBSTATION



Bright  
POWERTECH LTD.

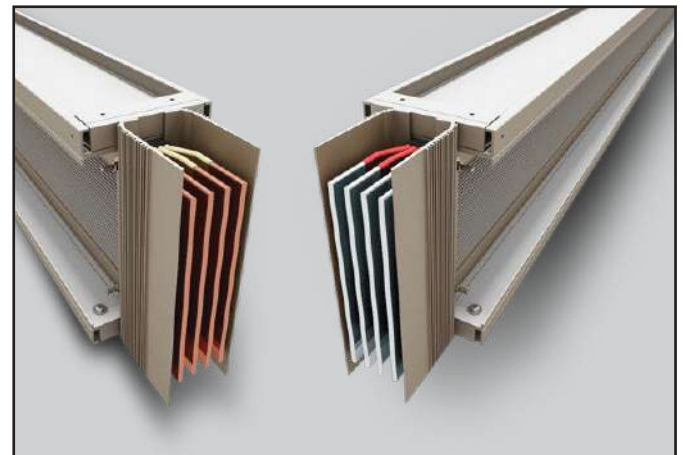
## Busbar Trunking (BBT)

**BRIGHT POWERTECH LTD. (BPL)** is the sole distributor in Bangladesh for the world-renowned **EPE** brand (**Made in Malaysia**) BBT for Supply, Installation, Testing, Commissioning and after-sales Service.

EPE is positioning itself as a global manufacturing leader in the bus duct system industry through its quality and good services.

To meet all your requirements for low, medium and high-voltage Bus duct system, we rely on our expertise in power distribution, ranging from 100Amp to 6300Amp.

Whether you require Busbar system for prime or standby application, we can meet your needs with our range of quality products developed by our highly skilled engineers and technicians.



## Automation System

**BRIGHT POWERTECH LTD. (BPL)** the name of high tech automation solution provider in Bangladesh. We always ready to share with our valued customer to provide the bellow automation solution services in different fields like Offices, Factories, Hotels, Restaurants, Schools, Colleges, Universities and Homes as well.

We have a strong & highly experienced dedicated team who engaged in this field for installation, maintenance, training and supervision for all of our valued customers.

### We are dealing with

- CC TV Automation System
- Access Control Automation System
- Fire Detection Automation System
- Metal Detector & Scanning Automation System
- Luggage / Baggage Scanner
- Time Attendance Automation System



CCTV System



Access Control



Fire Detector



Metal Detector



Luggage Scanner



Time Attendance

**Bright**  
POWERTECH LTD.

## EXCLUSIVE CLIENTELE





ISO 9001:2008 Certified

**CORPORATE OFFICE**

44/F/8 (4th floor), West Panthapath, Dhaka-1215, Bangladesh

Tel: +88 02 41025287, Fax: +88 02 58155002

Cell: +8801619900115, 01619900120, 01619900199

E-mail: [brightpowertechinfo@gmail.com](mailto:brightpowertechinfo@gmail.com), Web: [brightpowertech.net](http://brightpowertech.net)

**CHATTOGRAM OFFICE**

1498 D.T. Road, Pahartoli, Chattogram, Bangladesh.

Cell: +8801817718292, 01619900199

[www.brightpowertech.net](http://www.brightpowertech.net)